

Catalog Download

# PRODUCT CATALOG

ISSUE 10/2023



Overview

# INTRODUCTION

This catalog only shows selected product highlights offered by KingKong-Tools within the following product lines:

## RECYCLING

- ◆ Wood Recycling

## FORESTRY

- ◆ Wood Chippers
- ◆ Forestry Mulchers
- ◆ Stump Cutters
- ◆ Tools for universal use

## CONSTRUCTION

- ◆ Drum Cutters
- ◆ Mining
- ◆ Soil Stabilizing and Cold Recycling
- ◆ Trenching
- ◆ Foundation Drilling
- ◆ Road Milling
- ◆ Tunneling
- ◆ Rock Crushers
- ◆ Tools for universal use

## AGRICULTURE

- ◆ Soil Cultivation

The complete product range including all products can be found online at [www.kingkong-tools.com](http://www.kingkong-tools.com)

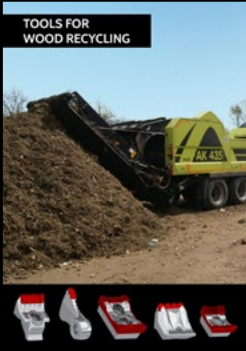
or in one of the detailed catalogs for the corresponding product line.  
Feel free to contact us. We will be happy to assist you in finding a suitable tool for your application.





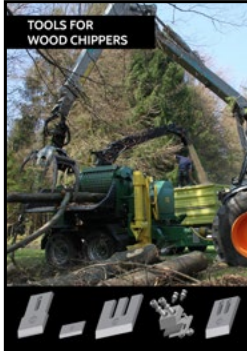
## RECYCLING

TOOLS FOR  
WOOD RECYCLING



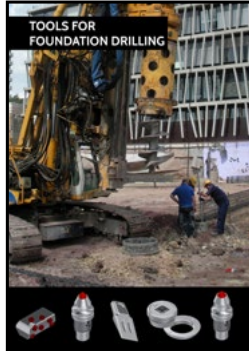
## FORESTRY

TOOLS FOR  
WOOD CHIPPERS

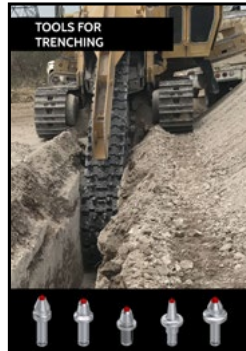


## CONSTRUCTION

TOOLS FOR  
FOUNDATION DRILLING

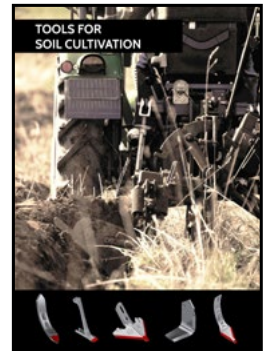


TOOLS FOR  
TRENCHING

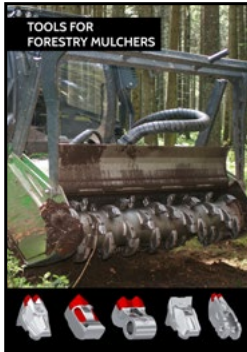


## AGRICULTURE

TOOLS FOR  
SOIL CULTIVATION



TOOLS FOR  
FORESTRY MULCHERS



TOOLS FOR  
ROAD MILLING



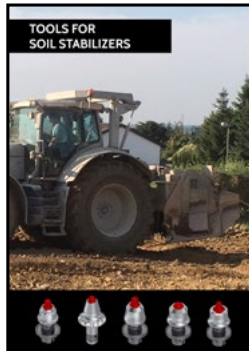
TOOLS FOR  
ROCK CRUSHERS



TOOLS FOR  
STUMP CUTTERS



TOOLS FOR  
SOIL STABILIZERS



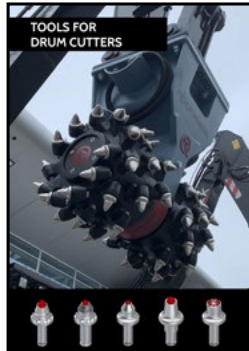
TOOLS FOR  
TUNNELING



TOOLS FOR  
UNIVERSAL USE



TOOLS FOR  
DRUM CUTTERS



TOOLS FOR  
UNIVERSAL USE





# RECYCLING



Catalog  
Download





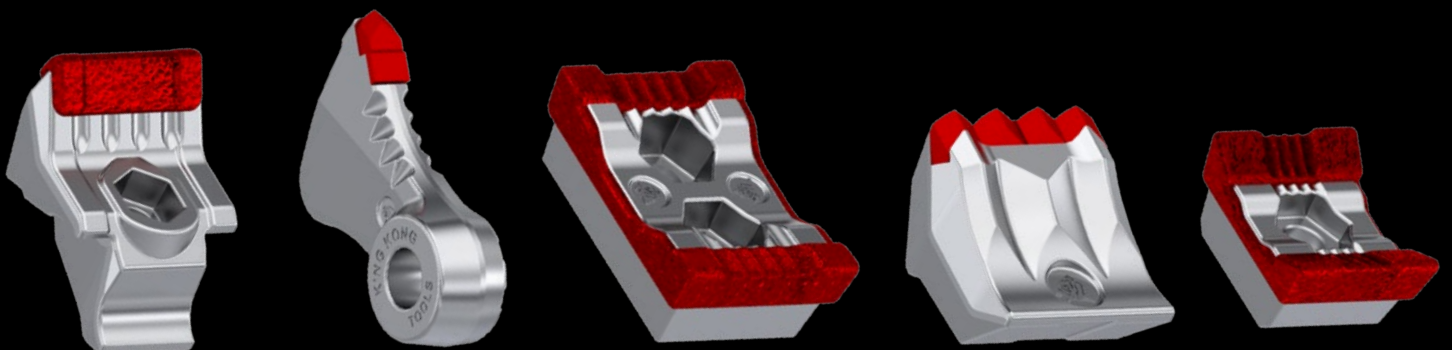




# TOOLS FOR WOOD RECYCLING



Catalog  
Download





# YOUR BENEFITS



Teeth, hammers, holders, as well as hardware fitting tub- and horizontal wood grinders of the following brands:

Bandit Beast ®, Diamond Z, Doppstadt, Hammel, Haybuster/Duratech, Hogzilla, Husmann, Jenz, Morbark , Peterson Pacific, Precision Husky, Rexworks, Rotochopper, Tana, Vermeer, Willibald and many more.



KING PACT

KING GRIT

Benefit from our innovative **KingPact** tool design and maximize performance and tool life of your grinder tips.

By forging enforced corners and by the use of our high quality **KingGrit** carbide material King Kong Tools will help you to increase the life time of your wearparts and will save you money!

Added steel volume in corners  
**consistently high cutting performance**

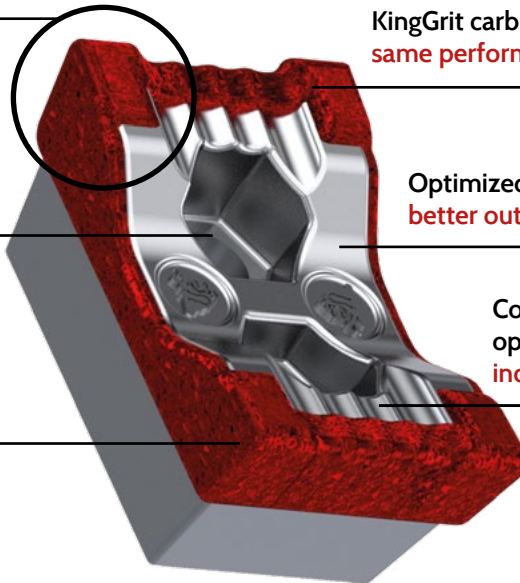
Deep bolt holes  
**easier tooth removal**

Greater thickness of hardfacing in areas with highest wear  
**longer tool life**

KingGrit carbide grit  
**same performance for every batch**

Optimized and aggressive cutting angle  
**better output material**

Corrugated surface on the body for optimized material flow  
**increased performance and output**





# FORESTRY



Catalog  
Download





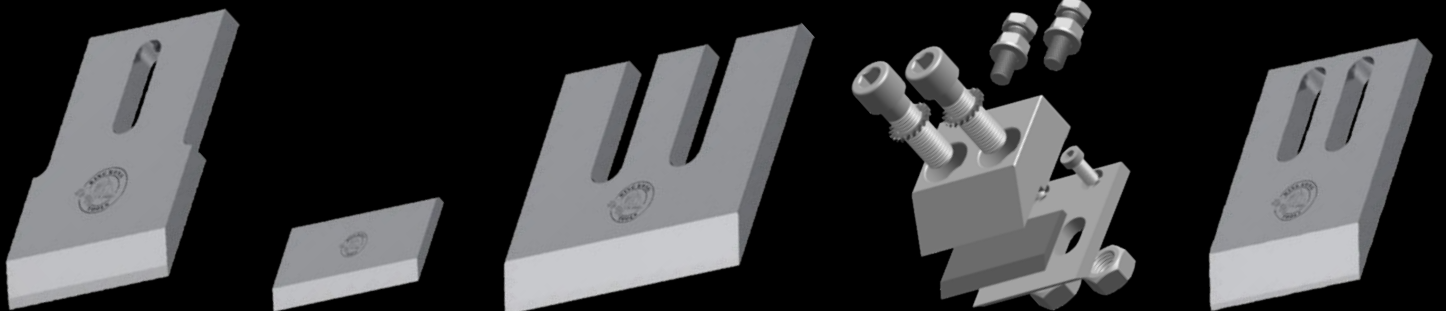




# TOOLS FOR WOOD CHIPPERS



Catalog  
Download



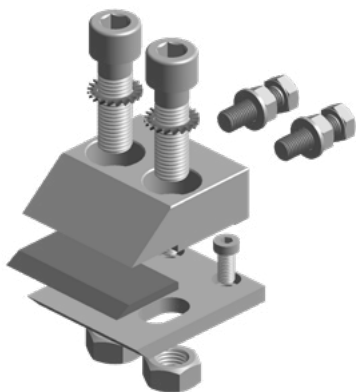


## YOUR BENEFITS



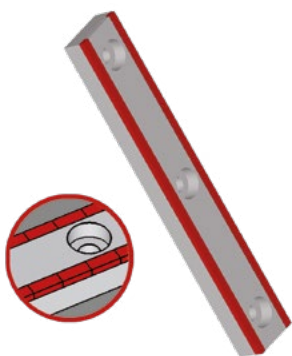
Chipper blades, chipper knives, holder-systems, counter knives, as well as hardware fitting wood chippers of the following brands:

Albach, Bandit®, Bruks, Doppstadt, Eschlböck, Heizohack, Jenz, Morbark, Mus-Max, Starchl, Vermeer, Wüst and many more.



### KingKong-Tools holder system

- ◆ handpicked steel qualities for longer tool life:  
great combination of durability and hardness
- ◆ extremely accurate machining and finishing of the cutting edge
- ◆ aggressive cutting angle for maximum output
- ◆ all standard parts in stock and short-term available



### Carbide tipped counterblow bars

- ◆ outstanding tool life due to solid tungsten carbide wear protection
- ◆ less maintenance work and operating costs on your wood chipper
- ◆ carbide wear protection on both edges
- ◆ continuous quality controls during the manufacturing process guarantee high quality products

# TOOLS FOR FORESTRY MULCHERS



Catalog  
Download





# YOUR BENEFITS



Cutting teeth, holder-systems, as well as hardware fitting forestry mulchers and tillers of the following brands:

AHWI, ASV/Terex, Berti, Bobcat, Bradco/Magnum, Caterpillar, FAE, Fecon, Gyro-Trac, Denis Cimag, John Deere, Loftness, Plaisance®, Rayco, Seppi, TMC Cancela, Ventura and many more.



## Carbide tipped cutting teeth

Longer tool life through

- ◆ increased holder protection through wider teeth
- ◆ aggressive cutting angles increase the productivity
- ◆ short-term availability of all standard products keeps you going
- ◆ excellent combination of aggressive but yet impact resistant tools



## Holder systems for forestry mulchers

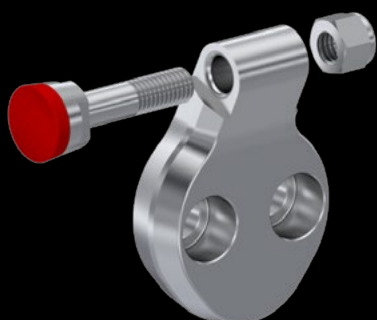
- ◆ high quality and reliability of every batch
- ◆ balanced and optimized components
- ◆ fast and convenient order process
- ◆ various designs available



# TOOLS FOR STUMP CUTTERS



Catalog  
Download





## YOUR BENEFITS



KingKong-Tools offers a wide range of cutting teeth and tool systems for stump cutters. Especially the heavy duty versions with additional carbide inserts convince more and more operators.

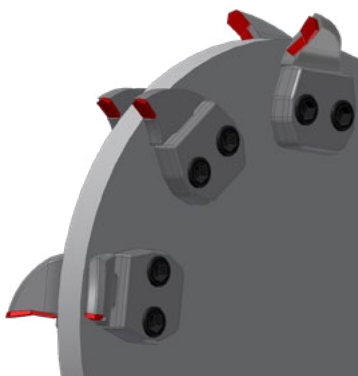
Replacement teeth, tool holders, as well as hardware fitting stump cutters of the following brands:

Laski, Rayco, FSI, Carlton, Ufkes Greentec, Vermeer and many more.

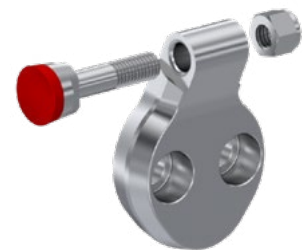


### Carbide tipped teeth from KingKong-Tools

- ◆ longer tool life due to additional tungsten carbide insert
- ◆ huge variety of tool options available
- ◆ short-term availability of all standard products keeps you going



### Huge variety of tool and holder systems

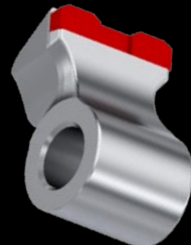
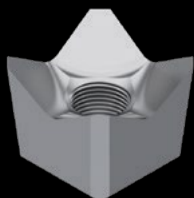




# TOOLS FOR UNIVERSAL USE



Catalog  
Download





# YOUR BENEFITS



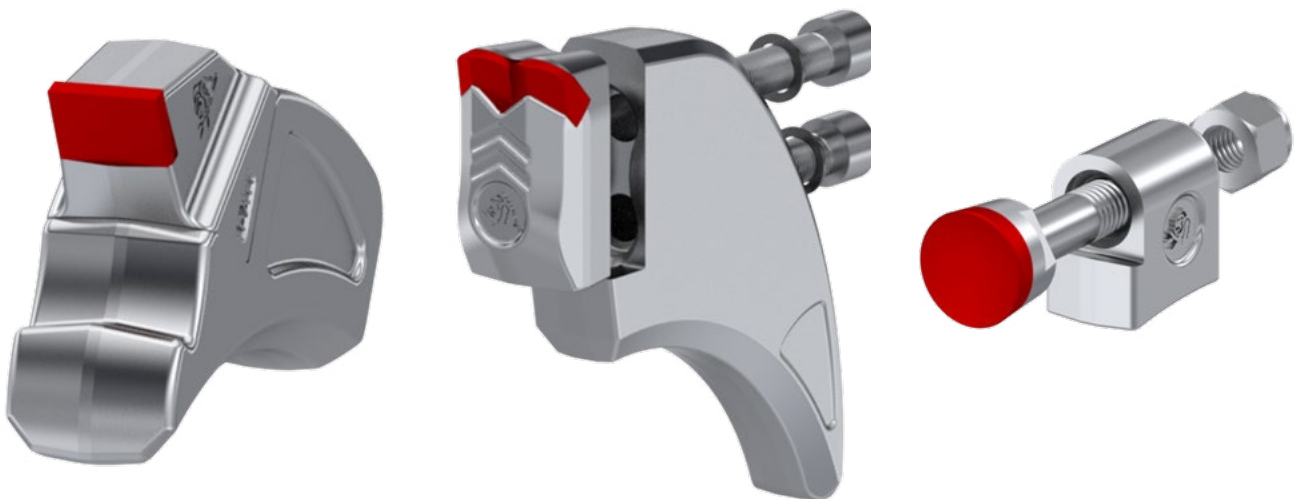
KingKong-Tools offers universally applicable tungsten carbide teeth, holder systems and hardware for forestry applications.

Do not hesitate to contact us:  
we'll find and develop the right tool system also for your forestry application.



## KingKong-Tools tool systems

- ♦ outstanding tool life due to optimized tungsten carbide grades for forestry applications
- ♦ lower maintenance and operating costs for your machines
- ♦ wide selection of different tooth options available
- ♦ high quality products due to high production standards





# CONSTRUCTION



Catalog  
Download









# TOOLS FOR SOIL STABILIZERS



Catalog  
Download







## YOUR BENEFITS

KingKong-Tools offers a wide selection of round-shank bits for soil stabilizing applications.

With a wide variety of steel bodies and carbide forms, we can offer you a suitable tool for every application. Contact us and let us advise you.



Benefit from our innovative **Shark** bits for soil stabilization and road milling. Thanks to the innovative development of wear-relevant components, noticeable longer tool life can be achieved.

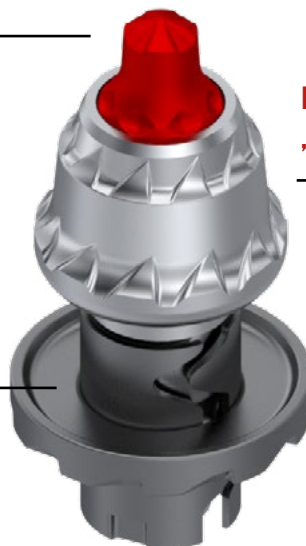
This reduces tool costs, increases the productivity of your machine and saves you money in the long run.



Optimized carbide geometry and balanced carbide grade



Double lock feature



Easy rotating „BULLHEAD“

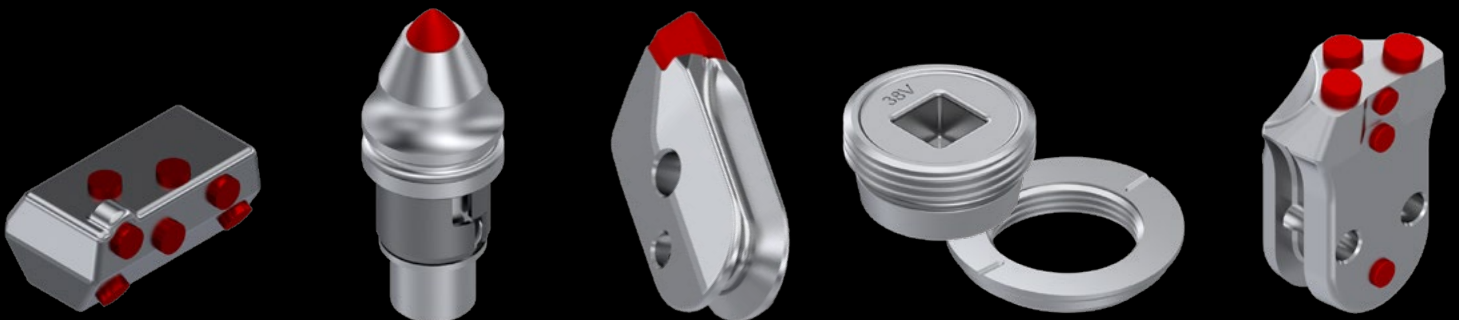




# TOOLS FOR FOUNDATION DRILLING



Catalog  
Download





# YOUR BENEFITS



Carbide tipped weld-on teeth, weld-on bars, screw connections, scraper blades as well as round-shank bits from Ø11mm to Ø35mm and round-shank bits with step shank which can be used for a huge variety of applications.

Take advantage of KingKong-Tools' wide range of round-shank bits. From small bits with shank Ø11mm to step-shank bits with Ø43mm/ Ø35mm: we certainly have a fitting round-shank bit for your application in our product range.



KingKong-Tools offers an extended product range for the tunneling and foundation drilling industry.

Discover the complete product portfolio of KingKong-Tools online at [www.kingkong-tools.com](http://www.kingkong-tools.com)

or order your copy of our tunneling product line catalog today by phone:

+49-7422-270099-100 (Europe)  
+1-678-765-7930 (USA & Canada)



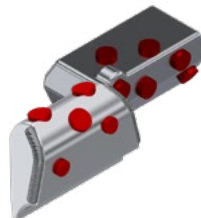
Round-shank bit systems



Replacement bars



Screw connections



Weld-on bars



Weld-on teeth



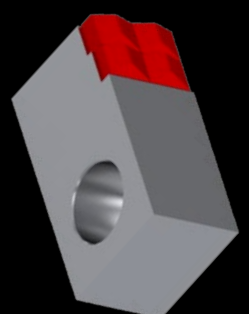
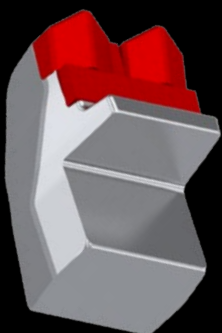
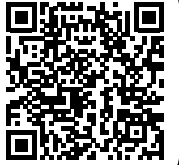
Trench Wall Cutters



# TOOLS FOR ROCK CRUSHERS



Catalog  
Download





## YOUR BENEFITS



KingKong-Tools provides carbide tipped tools of outstanding quality for various tool systems. You will find bolted and wedged tool systems as well as free-swinging hammers and round-shank bits for rock crushers in our product range.

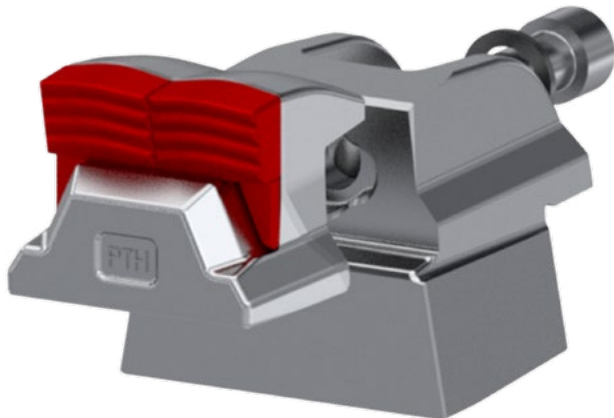
Teeth, hammers, holders as well as accessories fitting mobile rock crushers of the following brands:

FAE, Kirpy, PTH Products, Valentini and many more.



### KingKong-Tools tool systems for mobile rock crushers

- ♦ excellent tool life due to solid tungsten carbide wear protection
- ♦ reduced operating costs due to less maintenance
- ♦ high quality and reliability for every batch
- ♦ increased holder protection through wider teeth
- ♦ huge variety of tool options available
- ♦ round-shank bits available with optional KingShield hardfacing for extended tool life and improved performance

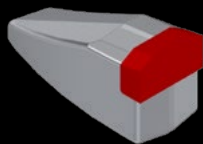
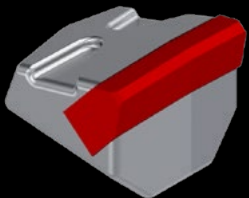
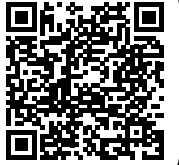




# TOOLS FOR UNIVERSAL USE



Catalog  
Download





# YOUR BENEFITS



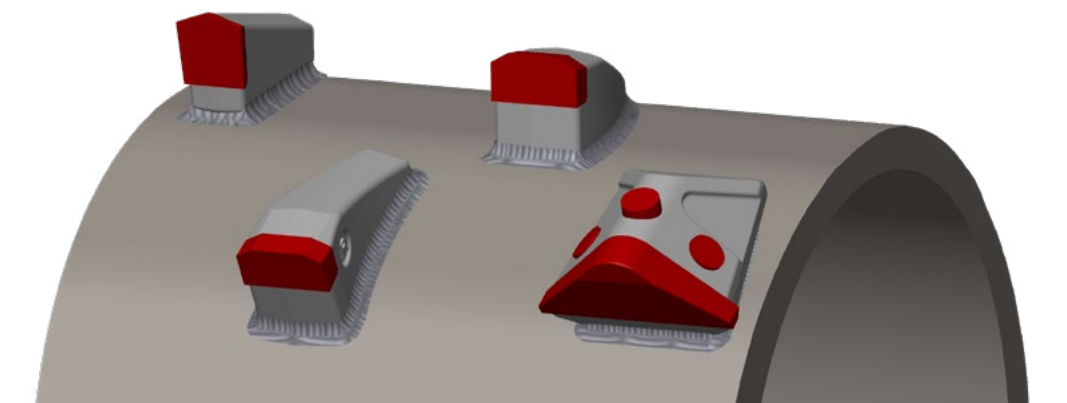
KingKong-Tools offers a large product range of universally applicable tools, holder systems as well as accessories for the construction industry.

Contact us, we will find and develop a suitable tool for your application.



## KingKong-Tools for construction

- ♦ wide range of universally applicable tools, e.g. weld-on teeth
- ♦ outstanding tool life due to optimized tungsten carbide grades
- ♦ less maintenance and operating costs for your machine
- ♦ high quality of the tools thanks to highest production standards
- ♦ high availability of all standard items
- ♦ development and individualization of tool types for your application is possible - please contact us, we are looking forward to your inquiry!





# TOOLS FOR DRUM CUTTERS



Catalog  
Download





# TOOLS FOR TRENCHING



Catalog  
Download





# TOOLS FOR ROAD MILLING



Catalog  
Download

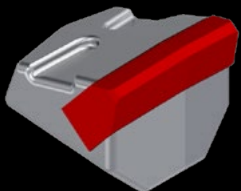
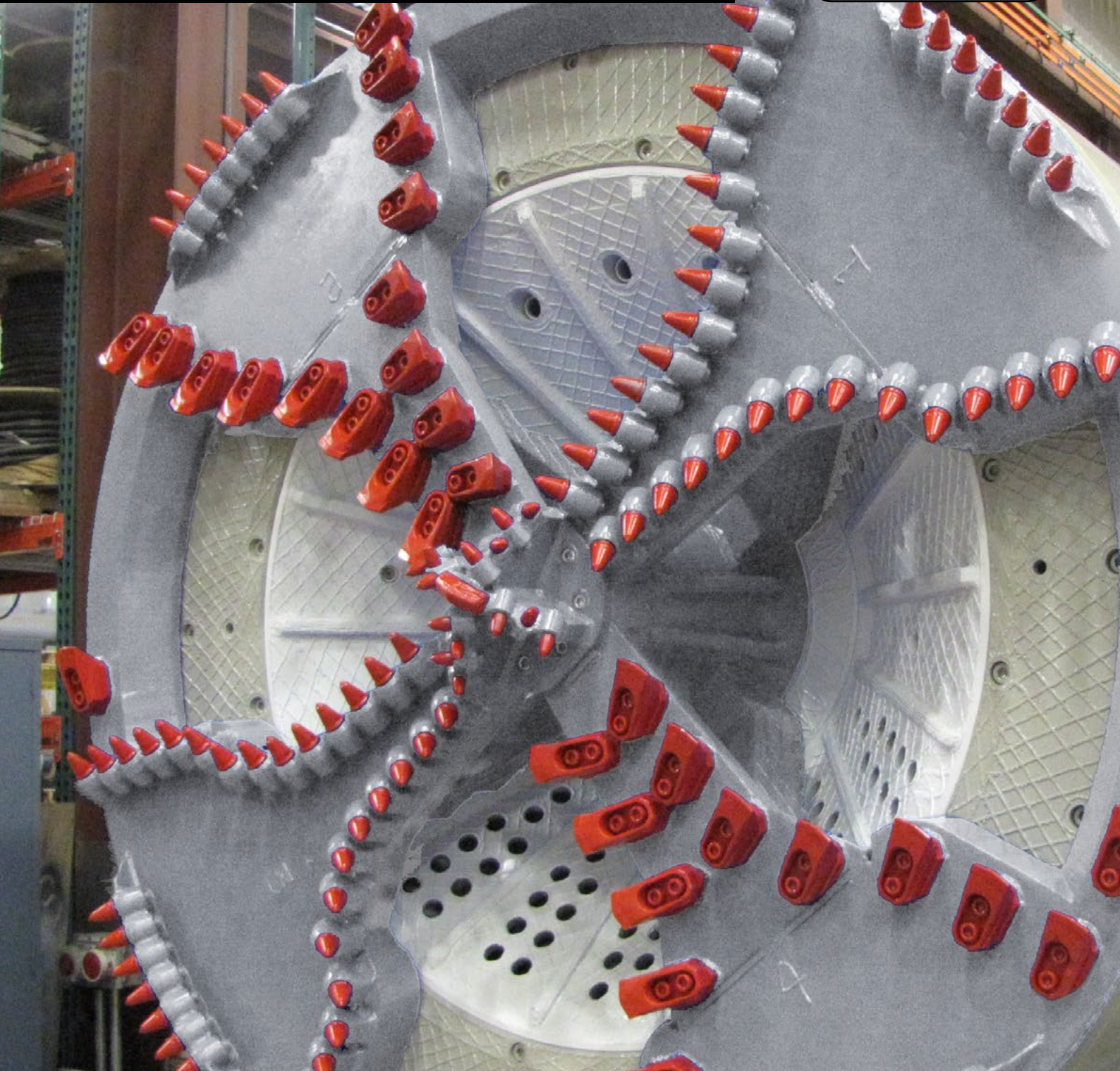




# TOOLS FOR TUNNELING



Catalog  
Download

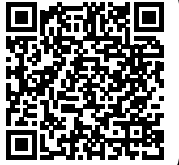




# AGRICULTURE



Catalog  
Download





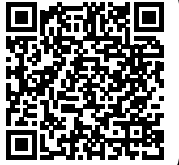




# TOOLS FOR SOIL CULTIVATION



Catalog  
Download





# YOUR BENEFITS



KingKong-Tools offers high-quality finished wearparts with and without carbide protection for agricultural machines and implements.

On the one hand, our tools ensure farmers and contractors a consistently high working quality of their machines over a much longer period of time than standard tools. On the other hand, users save valuable and expensive working time, as our refined tools have to be changed far less frequently.

Contact us and ask for tools for your application.



## KingKong-Tools for soil cultivation

- ♦ high quality of work over a long period of time
- ♦ fewer tool changes and longer tool life due to a careful selection of optimized tungsten carbide grades
- ♦ strong and reliable partner with over 20 years of experience in manufacturing of carbide tipped wearparts







Introducing the brandnew KingKong-Tools fan collection.



Gear up now with genuine KingKong-Tools apparel, toys, accessories, and more. The perfect gift for business partners and friends. We strive to provide high quality products in every respect, that's why you can rely on outstanding workmanship and durability of our merchandise articles, just as you can do in regards to our wearparts. Get into the monkey business and enjoy the latest KingKong-Tools collection!.

[www.kingkong-tools.com](http://www.kingkong-tools.com)



Men (MAK0001): \$98.00  
Women (MAK0002): \$89.00

## Sweat Jacket Contrast Performance

Extremely hard-wearing sweat jacket with contrasting coloured inserts on the sides, shoulders and sleeves, dimensionally stable cuffs with LYCRA® component, non-roughened inside (French terry), neckband, high-quality front zip and side pockets with zip.

**Colors:** Black, Red  
**Sizes:** XS-XXL  
**Material:** 50 % Cotton, 50 % Polyester



Men (MAK0003): \$106.00  
Women (MAK0004): \$99.00

## Tec-Jacket KingKong-Tools

Functional, sporty cut jacket with extended, slightly rounded back, dividing seams for perfect fit, stand-up collar and sleeve cuffs. High-quality, contrasting colour two-way front zip with chin protection, pre-laid side seams and slide-in pockets with click-down zips.

**Colors:** Black, Red  
**Sizes:** XS-XXL  
**Material:** 52 % Polyester, 38 % Polyamid, 10 % Spandex



Men (MAK0005): \$90.00  
Women (MAK0006): \$87.00

## Rain Jacket KingKong-Tools

Lightweight, functional, waterproof and windproof rain jacket with climate regulating mesh lining, comfortable soft fleece on the inside of the collar, a hood that can be integrated into the collar and adjusted in width, high-quality front zip with double windstop flap and outside pockets with zip.

**Colors:** Black, Red  
**Sizes:** XS-XXL  
**Material:** 2-Layer-Laminat made of 100 % Polyester





Men (MAK0007): \$115.00  
Women (MAK0008): \$111.00

### Light-Softshell Vest

Lightweight, breathable, hard-wearing, water- and windproof soft shell vest with high-quality 2-way front zip with internal wind protection flap, chin protection and reflective piping as well as side zip pockets.

**Colors:** Black, Red  
**Sizes:** XS-XXL  
**Material:** 2-Layer-Laminat made of 100 % Polyester



Men (MAK0009): \$139.00  
Women (MAK0010): \$130.00

### Softshell Jacket KingKong-Tools

Warming, breathable, water- and windproof softshell jacket with detachable hood, adjustable hem with drawcord, high-quality 2-way front zipper with inner wind protection flap and chin protection as well as zipper pocket on left sleeve and side zipper pockets.

**Colors:** Black, Red  
**Sizes:** XS-XXL  
**Material:** Softshell made of Interlock-3-Layer-Laminat (100 % Polyester)



Men (MAK0011): \$25.00  
Women (MAK0012): \$25.00  
Kids (MAK0013): \$20.00

### T-Shirt: My boss is a monkey

T-shirt with round neck and funny „My boss is a monkey“ print. Available as men's, women's and children's shirt.

**Colors:** Black  
**Sizes:** XS-XXL / Kids Sizes: 128-176  
**Material:** Single-Jersey made of 100 % Cotton



Men (MAK0014): \$25.00  
Women (MAK0015): \$25.00  
Kids (MAK0016): \$20.00

### T-Shirt: KingKong-Tools

T-shirt with round neck and fashionable „KingKong-Tools“ print. Available as men's, women's and children's shirt.

**Colors:** Black  
**Sizes:** XS-XXL / Kids Sizes: 128-176  
**Material:** Single-Jersey made of 100 % Cotton



## FAN CORNER



Part#: MAK0017  
Price: \$7.90

### Cup „Since 1996“

Beautiful cup with KingKong-Tools retro print „Since 1996“ and striking red color on the inside.  
Easy to clean, dishwasher safe.

Color: Black / Red



Part#: MAK0018  
Price: \$7.90

### Cup „My Boss is a monkey“

Modern cup with funny KingKong-Tools print „My boss is a monkey“.  
Easy to clean, dishwasher safe.

Color: Black



Part#: MAK0020  
Price: \$10.90

### Classic Cap: KingKong-Tools

Classic cap made of very robust material and KingKong-Tools logo print.

Color: Black  
Sizes: One size fits all



Part#: MAK0021  
Price: \$13.90

### Sport Cap Black

Fashionable sports cap with KingKong-Tools logo on the side. Ideal for hot summer days due to its light fabric.

Color: Black  
Sizes: One size fits all





Part#: MAK0021  
Price: \$13.90

### Sport Cap Grey

Fashionable sports cap with KingKong-Tools logo on the side. Ideal for hot summer days due to its light fabric.

**Color:** Grey  
**Sizes:** One size fits all



Part#: MAK0022  
Price: \$11.00

### Beanie KingKong-Tools

Warm knitted hat with KingKong-Tools logo for cold winter days.

**Color:** Black  
**Sizes:** One size fits all



Part#: MAK0023  
Price: \$79.90

### Wooden block case

Beautiful natural wooden block case with 60 natural high quality building blocks for constructing towns, houses and whatever other phantasies little constructors may have. Suitable for children age 2 - 8.

60 parts, manufactured at local handicapped workshops



Small (MAK0024): \$18,00  
Medium (MAK0025): \$20,00  
Large (MAK0026): \$26,00

### KingKong-Tools Gorilla

A little Gorilla to love. Black with original brown spot on head; grey back, fluffy, high quality. Made in Germany.

**Sizes:**  
Small: 20cm high  
Medium: 25cm high  
Large: 30cm high



## FAN CORNER



Part#: MAK0027  
Price: \$12.00

### KingKong-Tools Buff

Very versatile buff with printed KingKong-Tools logos. Can be used both as a hose scarf and as headgear.

**Color:** Black



Small (MAK0028): \$20.00  
Large (MAK0029): \$30.00

### KingKong-Tools Towel / Shower Towel

Cuddly shower towel with KingKong-Tools logo. Available in two different sizes.

**Color:** White  
**Material:** 100% Cotton  
**Sizes:** Small: 50x100 cm  
Large: 70x140 cm



Part#: MAK0030  
Price: \$23.90

### Umbrella

Eye-catching, red umbrella with imprinted KingKong-Tools logo.

**Color:** Red



Part#: MAK0031  
Price: \$12.00

### KingKong-Tools Cards

Card game classics in the KingKong-Tools Edition for the whole family. First to discard all cards wins.





**Part#:** MAK0019  
**Price:** \$24.90

### KingKong-Tools „Rubik's Cube“

Challenging magic cube for puzzling. With different colored KingKong-Tools logos on all sides.



**Part#:** MAK0032  
**Price:** \$12.90

### King Kong Tools Sticker Set

High quality KingKong-Tools logo stickers with transparent background and die cut logo. Made for outdoor use.

**Color:** White, Black  
**Size:** Logo Diameter = 9.5 cm (small) and 24.5 cm (large)



**Part#:** MAK0033  
**Price:** \$17.90

### KingKong-Tools Socks

Fashionable socks with King Kong Tools pattern for women, men and young people. The mixture of soft cotton, polyamide and spandex offers a very good fit and comfort.

**Color:** Black  
**Sizes:** 36-40 / 41-46  
**Material:** 70% Cotton, 20% Polyamide, 3% Spandex



**Part#:** MAK0034  
**Price:** \$39.90

### KingKong-Tools Solar Powerbank

Solar Powerbank with KingKong-Tools logo imprint and integrated LED flashlight in nice aluminum design. Simply place in the sun to start the charging process. If the sun is not shining, simply recharge the powerbank via USB. Powerbank comes with overvoltage protection and connectors for Android and iOS devices.

**Material:** Aluminum  
**Capacity:** 8000 mAh



# MANUFACTURING PROCESSES



## Carbide tipped tools

The manufacture of our high-performance carbide-tipped tools requires several production steps of high complexity. Every single one of these steps contributes crucially to the final quality of the finished product. This is the reason why we focus so intensely on quality control and inspections throughout the complete manufacturing process.

## Fabrication of the carbide tips

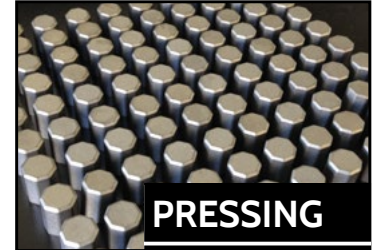
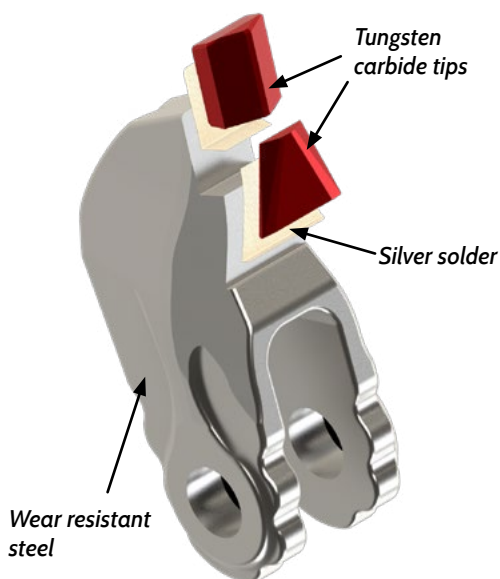
The carbide cutting inserts of our tools are made by pressing and sintering of powder mixtures consisting mainly of tungsten carbide (WC) and Cobalt (Co). The individual powder recipe, its grain size, and the carbide geometry are exactly adjusted to the intended application of the tool. First, the different powder components are mixed and then milled to the designated grain size. In the following step, the powder mixture is prepared for pressing by granulation in a spray tower. Mix ratio, granule size, and other properties of the granulate are permanently monitored in the laboratory and then released for the subsequent manufacturing processes.

## Connecting carbide tip and tool body

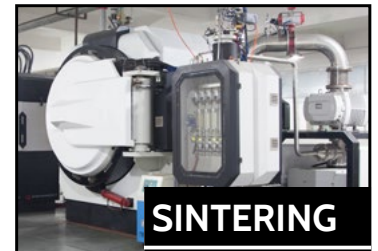
The body of the tool is made of high quality wear resistant steel, drop forged and machined to a very high precision. Specifically developed brazing alloys are used to fix the carbide inserts extremely tight to the steel body. The holding force of the brazing joint is permanently monitored and documented by breaking tests. According to the application requirements, the steel body will be hardened, either partly or completely, thus reaching a very high resistance against wear and tear.

A final jet blasting gives the tools a silk-mat shining surface which also serves as an efficient rust-protective finish.

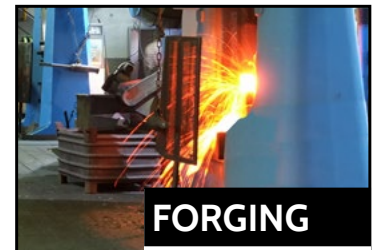
Our strictly observed permanent quality control of all manufacturing steps enables us to supply tools of consistently high performance and reliability.



**PRESSING**



**SINTERING**



**FORGING**



**MACHINING**



**MACHINING**



**BRAZING**





## Tools with hardfacing

### King Grit



The King Grit technology is based on the MIG (metal inert gas) welding process where an electric arc burns between the melting and the welding rod in an inert gas atmosphere at extremely high temperatures. Computer-controlled feeding of carbide chips into the welding zone creates a coarse grained surface with carbide chips equally distributed throughout the King Grit layer. Tools protected by King Grit show very high wear resistance, extreme impact tolerance and unmatched cutting ability and are used in the most severe cutting conditions.



### King Shield



In certain applications, cutting ability is not what you are looking for. For example, round shank bits working in abrasive rock experience enormous wear along the steel body of their cutting heads. King Shield perfectly protects the carbide tip from being washed out.

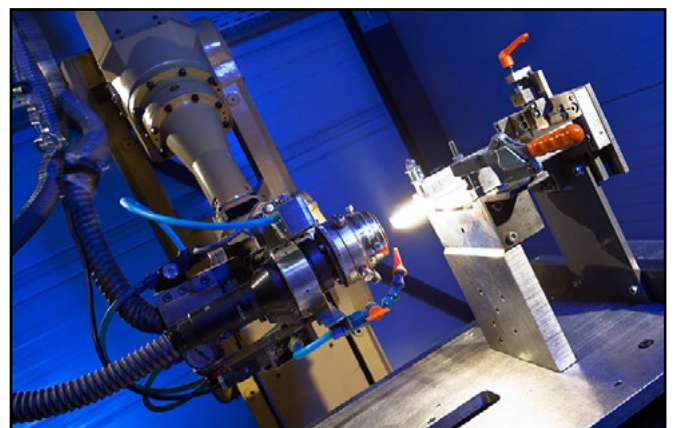
Here, the MIG electrode consists of a special alloy with microscopic WC (tungsten carbide) particles imbedded. The extreme temperatures create a plasma welding layer with a smooth and extremely hard surface. It resists the enormous abrasiveness of quartz containing minerals while showing a high tolerance against impact loads.



## Plasma-Laser-Hardfacing (PLA)

Another technology of KingKong-Tools is the PLA process, also called plasma laser hardfacing. During the plasma laser hardfacing, a laser creates a melted bath on the tool surface into which a defined amount of metal powder is added through a nozzle. The welded beads can create almost any desired shape. This flexibility in applying the wear protection ensures that the cutting edges and base bodies of our tools are optimally and effectively protected against wear.

Using a special manufacturing process, our 3D laser allows us to construct metallic material applications on existing tools as if it were one cast without any loss of quality, density, and free of pores or cracks. As a result, the plasma laser hardfacing process offers exceptional wear protection while maintaining the aggressive cutting properties of our blade tools.





# TEAM



We at King Kong Tools strive to offer you the best products and customer service possible. Therefore, we not only use modern and sophisticated manufacturing processes but also provide individual consulting by our well-experienced and highly motivated staff who are eager to support you and your wear part requirements. Do not hesitate to contact us if you have any questions or comments about our products and services.

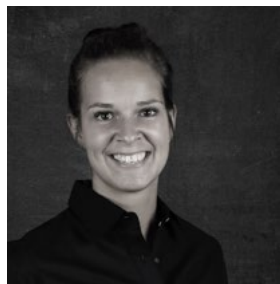
**We are looking forward to hearing from you soon!**



Hardy King



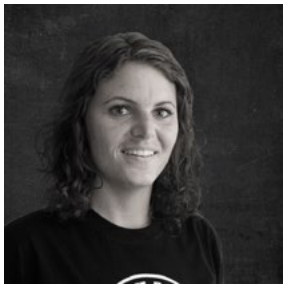
Axel Rogg



Alexandra Teufel



Cathrin Noder



Franziska Kroner



Frank Dresel



Benjamin Beißwanger



Alissa King



Nils Wagner



Lars Angenendt



Roland Noder



Stefan Ganter



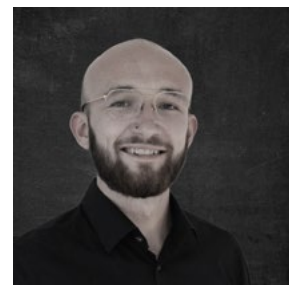
Benny King



Martina Rapp



Christian Wick



Edwin Tegtmeier

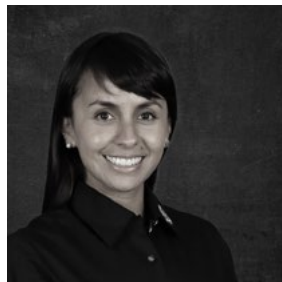




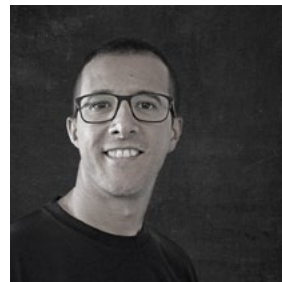
Jens Munk



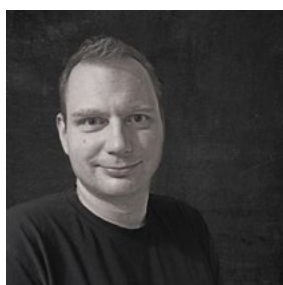
Philipp Thomann



Sofía Vázquez Topete



Mustafa Elazri



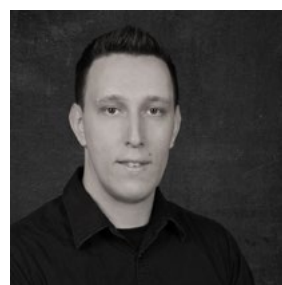
Luka Svetina



Anjuska Kogal



Claudio Del Corso



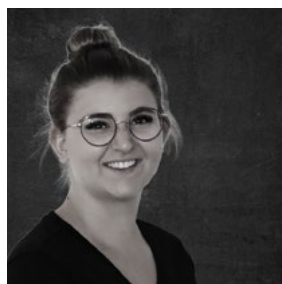
Alen Ivanušič



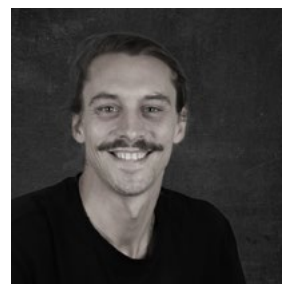
José Alvarado



Thomas Wöhrstein



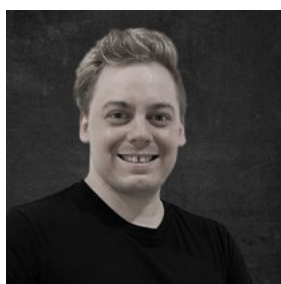
Lena Günter



Christopher Hermann



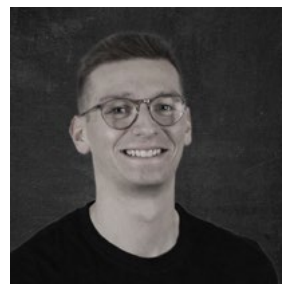
Kasey Coleman



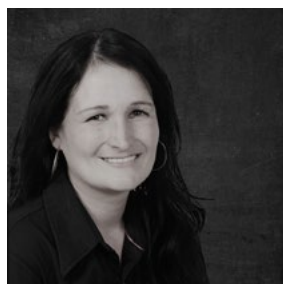
Steven Hillhouse



Mihaela Kosi



Elias Bernhardt



Elizabeth Szabo



Tibor Szabo



## COMPANY PROFILE



### King Kong Tools: The right choice for reliable performance.

Being used all over the world and under the most severe conditions, our teeth mulch in Canada and the United States, help to maintain roads in Sweden or Austria, or fulfill their daily duties in hundreds of grinders in Germany.

The reliability and the high availability of our tools as well as the fast handling convince more and more customers all over the world.

Our young, highly motivated team will be happy to assist you in selecting a suitable tool for your machine and ensures quick processing of your order as well as an on-time delivery. For a variety of models from established manufacturers of forestry mulchers, stump cutters, wood grinders, rock crushers and wood chippers as well as drilling heads, road milling machines, trenchers and agricultural soil tillage machines, our suitable tools are ready to be shipped from our warehouses in Germany and the USA.

Our products are sand-blasted, packaged in handy units and are subject to a strict quality control - this is what distinguishes us as a German company.

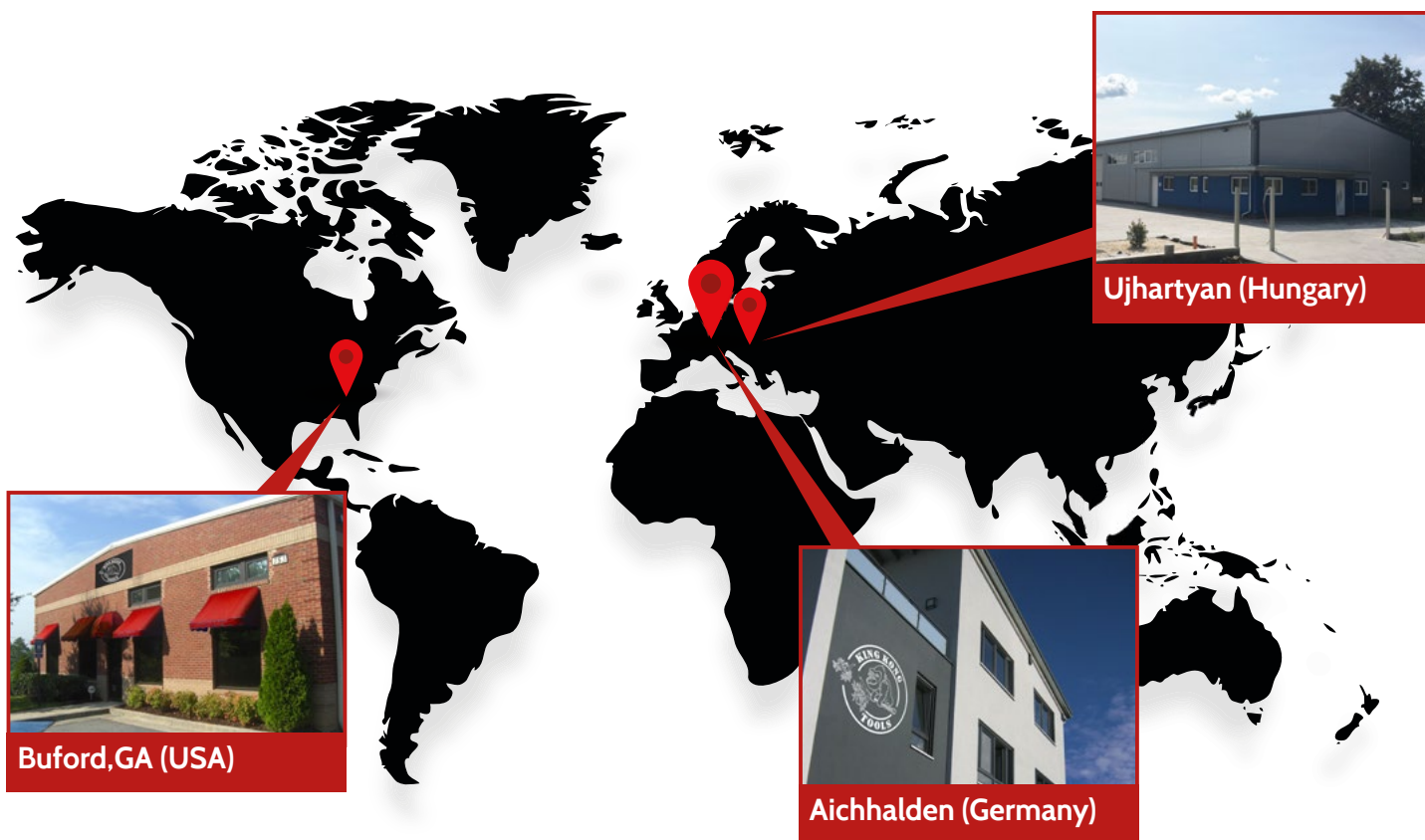
In addition, with many years of application experience, we can optimize the tool specifically for your shredding task.

Our experienced application technicians first analyse the situation on-site together with you. On this basis they create with you an individual solution. The advantage for you is immediately noticeable: by choosing the suitable geometry and carbide type, we increase considerably the output of your mulcher, shredder, chipper, stone crusher or milling machine and extend the service life of your tools at once. That saves you time and money.

**We keep our promises. Take us at our word!**







King Kong Tools is a globally operating company with its headquarters in Aichhalden in the German Black Forest.

The immediate availability of all wear tools is an essential request of our customers. Hence, we carry substantial stock of all standard parts at our warehouse locations in the US, Hungary as well as at our headquarters in Germany. We serve the markets with sales and service staff operating from there.

#### Headquarters USA

Since 2009 our customers in Canada and the USA have been advised and supplied from the US headquarters in Buford, Georgia.



#### KingKong-Tools GmbH & Co. KG

Karl-Simon-Str. 12  
78733 Aichhalden  
Germany



+49-7422-270099-100



#### King Kong Tools LLC

753 Church Street  
Buford,GA 30518  
USA



+1-678-765-7930



#### Distribution Center Hungary

Liebner dulo 1252 hrsz  
2367 Ujhartyan  
Hungary



+36-205-542-776





[www.kingkong-tools.com](http://www.kingkong-tools.com)



Recycling



Forestry



Construction



Agriculture